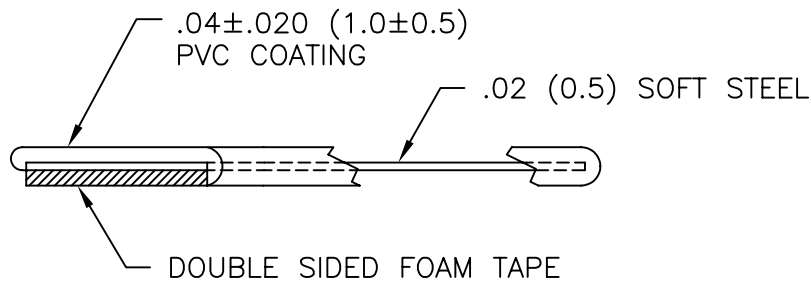
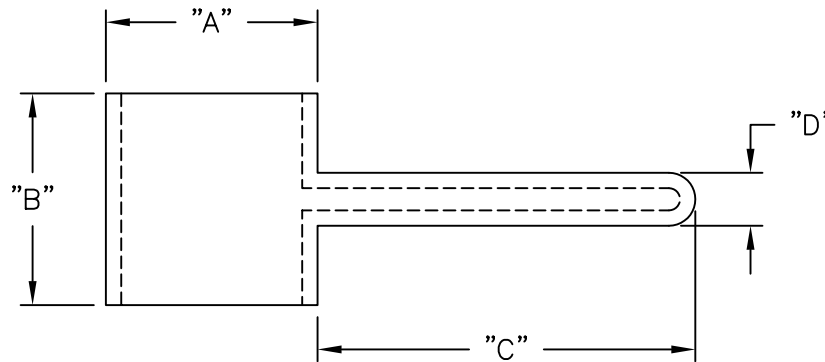


PART NO.	"A" REF.	"B" +.039(1.0) -.020(0.5)	"C" REF.	"D" REF.
PCC-5	.31 (8.0)	.31 (8.0)	.59 (15.0)	.08 (2.1)
PCC-9	.55 (14.0)	.55 (14.0)	.98 (25.0)	.14 (3.5)
PCC-12	.75 (19.0)	.75 (19.0)	1.58 (40.0)	.16 (4.0)



NOTES:

1. MATERIAL: SOFT STEEL (RMS-203)
2. COATING: PVC (RMS-118).
3. POLYETHYLENE FOAM TAPE (RMS-119)
4. COLOR: WHITE.

TITLE: PLASTIC COATED CLAMP		DWG IN IN (MM)		FINAL		PRINT TYPE		
D	SEE ECN #1254 FOR CHANGES	SK 11.29.06	TOLERANCES UNLESS NOTED	FILE # PCC	DWN: P.B.	APP:	PART # SEE TABLE	PRINT TYPE CA
C	ADDED NOTES	SM 06.20.01	.XX=±.010	MAT'L: SEE NOTES	DT: 07-11-94	DT:		
B	ADDED RMS-118 AND -119, CHANGED FILE NO. AND TITLE BLOCK	SM 06.01.01	.XXX=±.005	RE: RICHCO, INC.	RICHCO INC. PO BOX 804238, CHICAGO, 60680 (773) 539-4060			
A	TOLERANCE FOR "B" WAS ±.020(0.5)	MO 2/11/98	FRAC=±1/64					
REV	DESCRIPTION	ENGR DATE	ANG=±1°					